
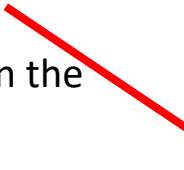
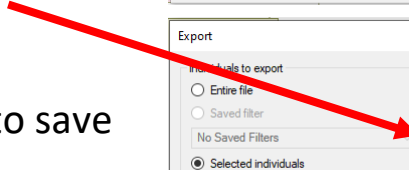
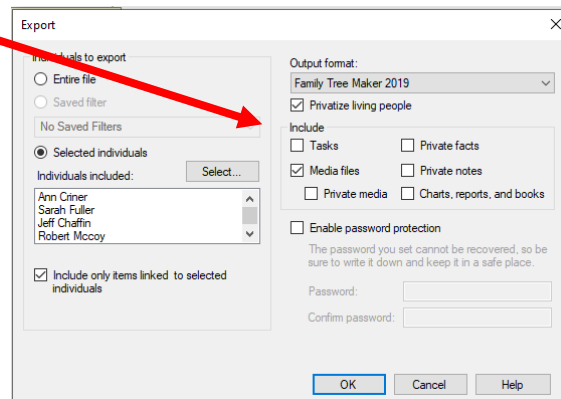
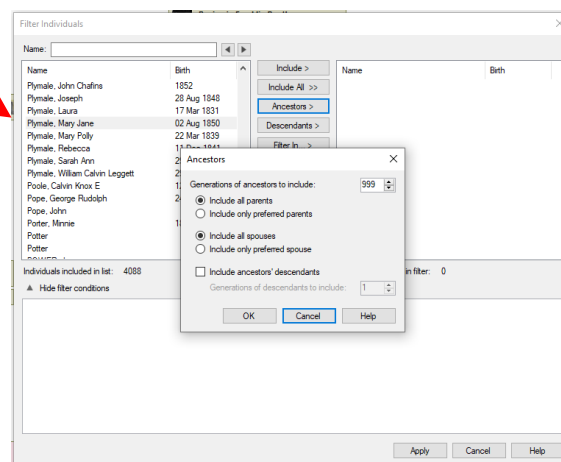
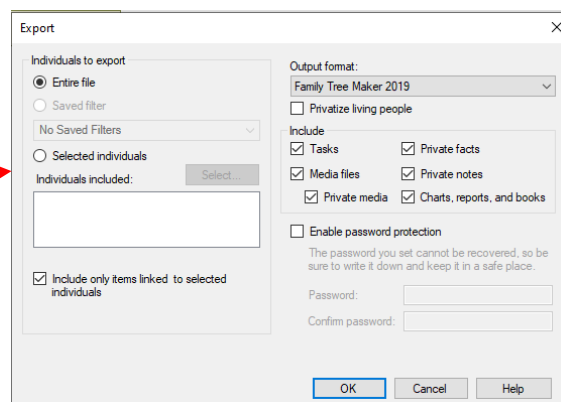


## Steps to Exporting Part of a Family Tree Using Family Tree Maker Software

### [Video Link](#)

- Open Family Tree Maker Software.
- Go to File>Export. 
- Choose the Ancestor.
- Choose either ancestors or descendants.
- Choose who to include in the export. 
- Choose if you want to exclude anyone.
- Click Apply.
- Choose to privatize living people.
- Choose to include or not private facts, notes, media, etc.
- Click Ok
- Name it and choose where to save it. 
- This will save as a Family Tree Maker file.



If this needs to be a Gedcom, you can then open the file in Family Tree Maker and Export it as a Gedcom. Know that doing so will not export the images and records, only the data.

